

TRUMPETER SWANS

A ONCE ENDANGERED SPECIES



CONTENTS

Lesson Plan
Work Sheets
Activity Sheets
Coloring Pages

STEM Based



LESSON PLAN

GRADES K - 5

SUBJECT: **Trumpeter Swans**

STEM: **Life Science**

LESSON OBJECTIVES

- Read a story about Trumpeter Swans
- Explain the elements of a story using such questions as *main characters, setting, problem, obstacles, and resolution*.
- Identify new vocabulary words
- Describe animals found on and near lakes
- Describe how Trumpeter Swans nest
- Compare and contrast two mammals

LESSON STANDARDS

- Use illustrations and details in a story to describe its characters, setting, or events
- Ask & answer questions about key details in a text
- Cite specific textual evidence to support analysis of science and technical texts

LESSON STEPS

MOTIVATION

Ask students what animals can be found in and around lakes
Scan the QR code in the resource book and ask students what it sounds like

DEVELOPMENT

Read *Spring! Time to Build a Nest, A Story about Trumpeter Swans*
Discuss story and plot using such questions as *main characters, setting, problem, obstacles, and resolution*
Discuss new vocabulary words found in the Glossary
Discuss the information found in the section "Interesting Facts"

RESOURCES REQUIRED

Spring! Time to Build a Nest, A Story about Trumpeter Swans, by Barbara Renner, illustrated by Rita Goldner
<https://www.reconnectwithnature.org/News-Events/The-Buzz/What-s-The-Difference-Beaver-Vs-Muskrat>

ASSESSMENTS

MATCHING

Match the vocabulary word to its correct definition

WRITING

Write a story about a lake scene that contains the story elements of *character, setting, problem, obstacles, and resolution*.



LESSON PLAN

GRADES K - 5

SUBJECT: **Trumpeter Swans**

STEM: **Life Science**

CONTEXT

This lesson is appropriate for grades K - 5. The activities and work sheets can be adapted or changed to fit the grade level.

Many elementary schools K - 8 use picture books as an introduction to other subjects such as science, history, language arts, and even math.

Use the picture book, *Spring! Time to Build a Nest, a Story about Trumpeter Swans*, to introduce a Life Science unit on Trumpeter Swans. This book contains an animal sound, a glossary of terms, and interesting facts about the largest waterfowl species native to North America.

Trumpeter Swans were once an endangered species because in the early 1900s they were hunted for their feathers, meat, and eggs. In 1986 a restoration project began in order to reestablish the Trumpeter Swan. Eggs were flown from Alaska to the Midwest to be incubated, hatched, and reared.

Spring! Time to Build a Nest, a Story about Trumpeter Swans is a whimsical story about Pen and Cob Swan searching for a place to nest. Typically, swans like to live on abandoned beaver lodges or muskrat dens, but since these places were already occupied, they decided to build their own nest.

ACTIVITY AND WORK SHEETS

1. Discussion Points: Characters, Setting, Problem, Obstacles, Resolution
2. Vocabulary in Your Own Words
3. Interesting Facts
4. Venn Diagram: Compare and Contrast
5. Trumpeter Swan Maze
6. Trumpeter Swan Word Search
7. Coloring Page
8. Coloring Page

ADDITIONAL BOOKS TO READ

Summer! Time to Search for Food, A Story about Trumpeter Swans, by Barbara Renner, illustrated by Rita Goldner
The Trumpet of the Swan, by E.B. White



DISCUSSION POINTS

Read *Spring! Time to Build a Nest, A Story about Trumpeter Swans*.
Discuss the story by filling in the boxes.

Main characters

Setting



Problem



Obstacles

Resolution





VOCABULARY

Refer to the Glossary in *Spring! Time to Build a Nest* and explain in your own words what each photo represents.





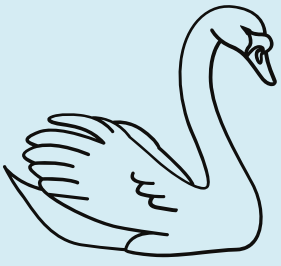


VOCABULARY

Refer to the Glossary in *Spring! Time to Build a Nest* and explain in your own words what each photo represents.

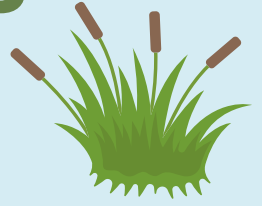




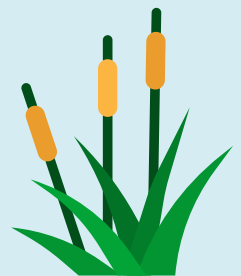
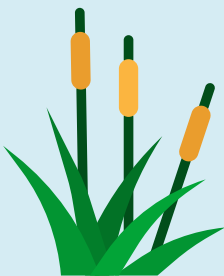


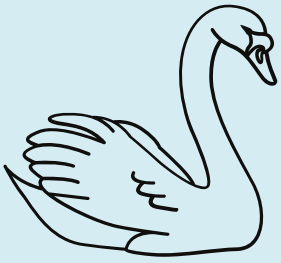
INTERESTING FACTS

Refer to the Interesting Facts found at the end of *Spring! Time to Build a Nest* and fill in the blanks to complete the sentences.



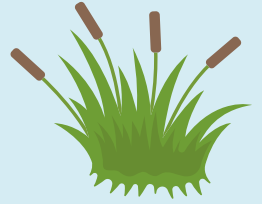
1. Trumpeter Swans nest between _____ and _____.
2. Trumpeter Swans _____ for life.
3. Sometimes Trumpeter Swans build their nests on top of _____.
4. Trumpeter Swans will also build their nests on top of _____.
5. The decline in the Trumpeter Swan population could have been attributed to overhunting _____ and _____.
6. It takes Cygnets _____ to hatch.
7. It may take the Trumpeter Swan _____ to build a nest.
8. The female Trumpeter Swan lays between _____ and _____ eggs.
9. The female Trumpeter Swan lays her eggs _____.
10. The female Trumpeter Swan keeps her eggs warm by covering them with her _____.





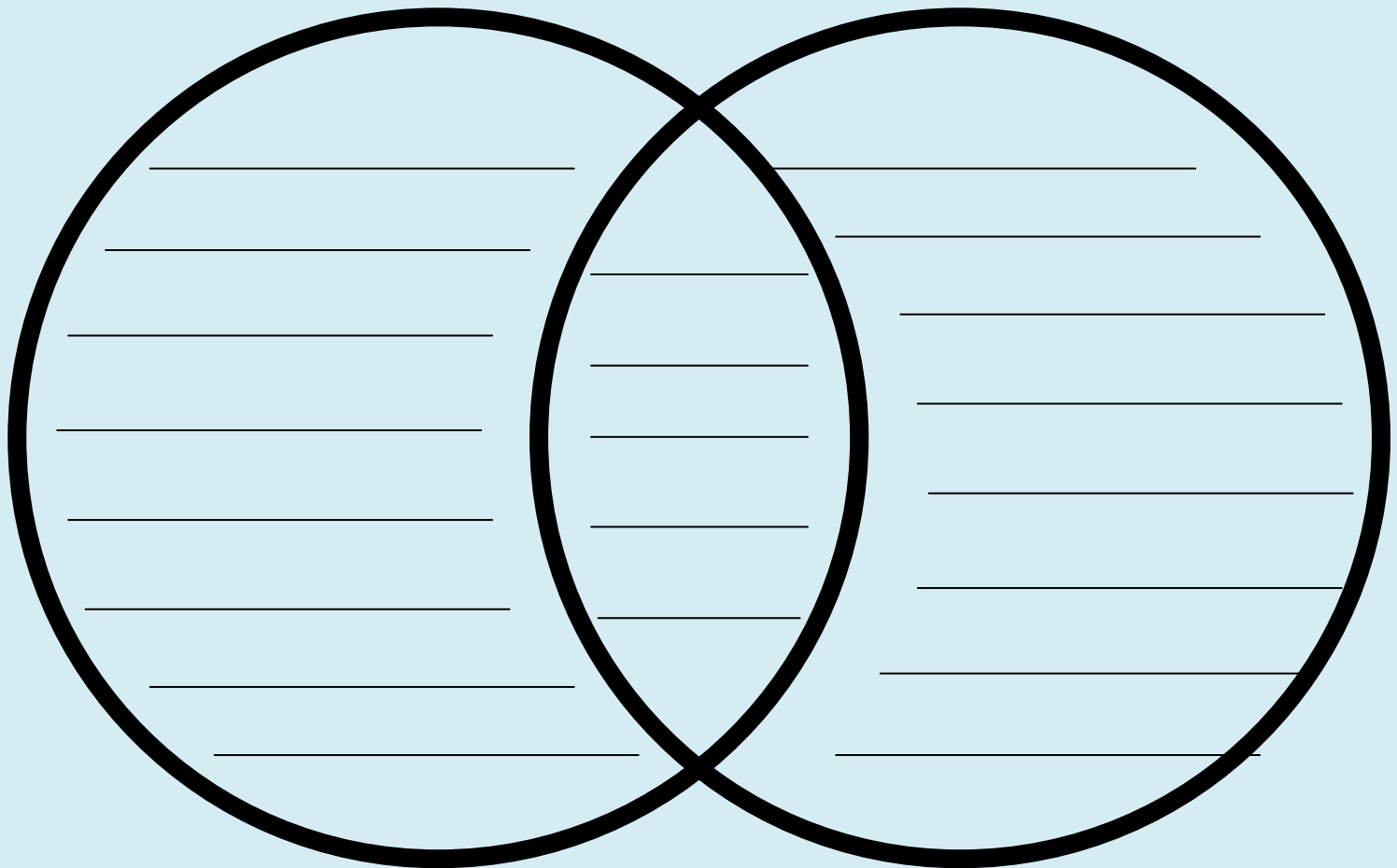
COMPARE & CONTRAST

Complete the Venn diagram by comparing and contrasting a beaver and a muskrat.



Beaver

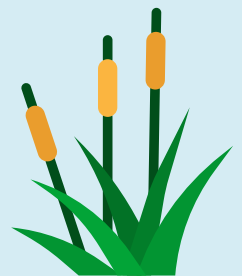
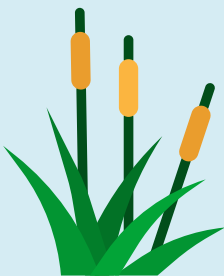
Muskrat



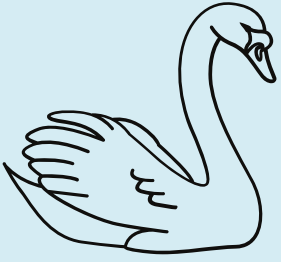
Contrast

Compare

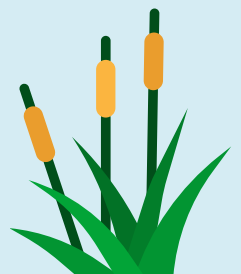
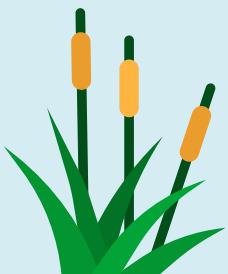
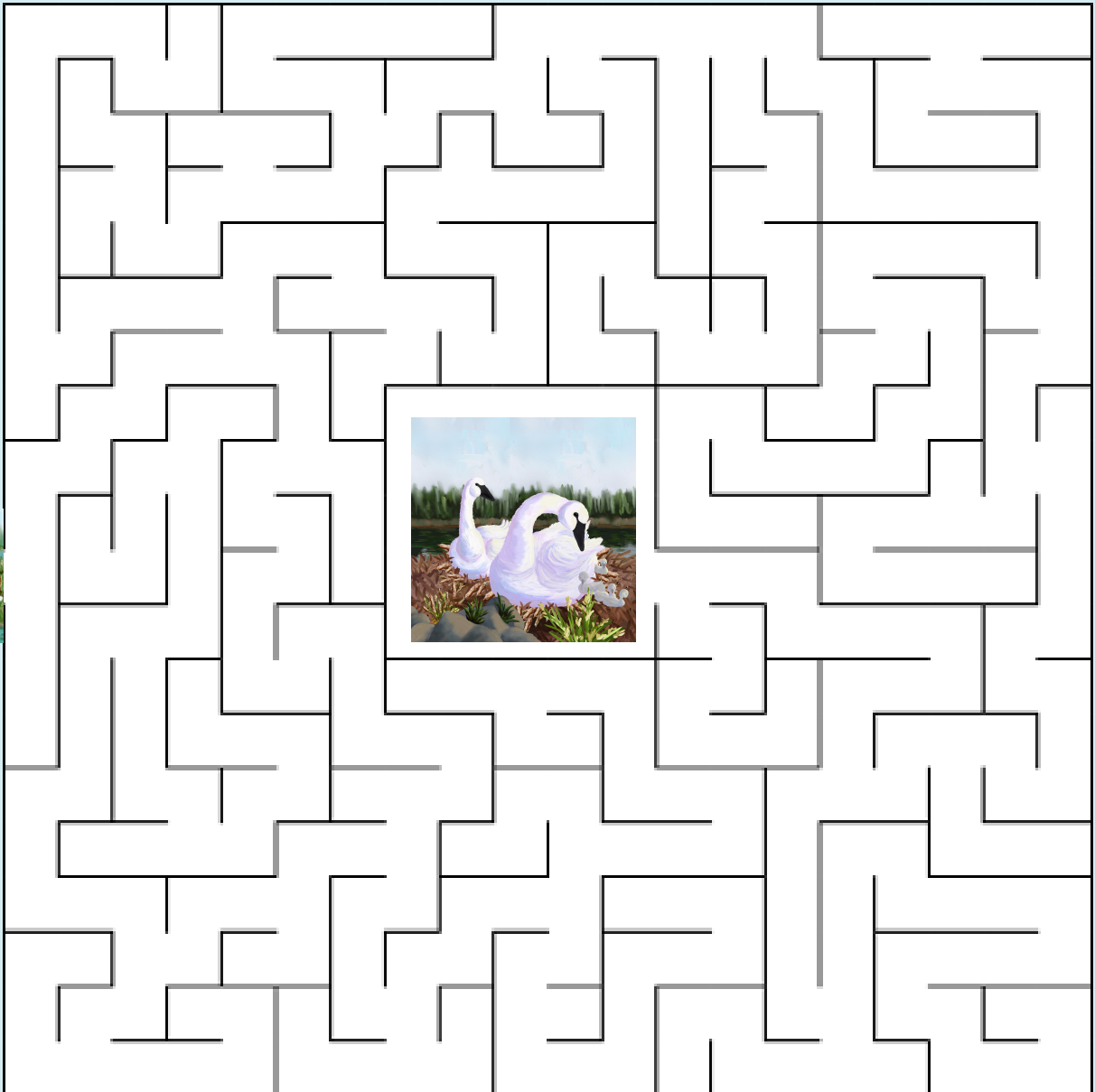
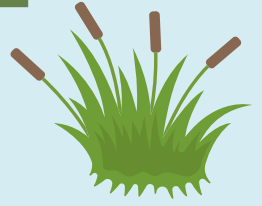
Contrast

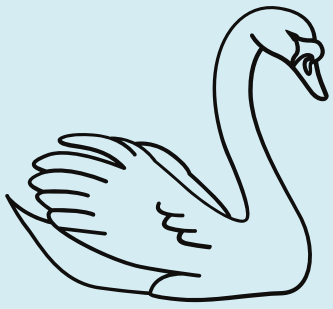


TRUMPETER SWAN MAZE

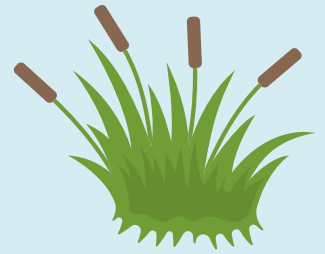


Help Pen and Cob find their nest.





TRUMPETER SWAN WORD SEARCH

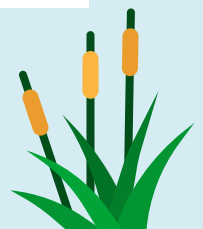
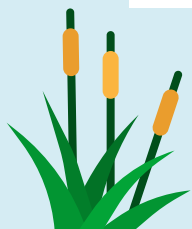


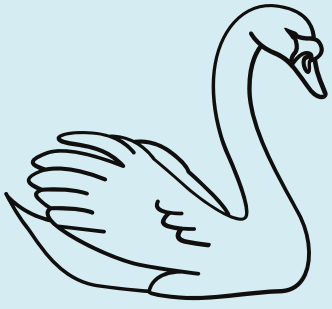
Beaver
Build
Bulrush
Cattail
Cob

Cygnet
Egg
Grass
Muskrat
Nest

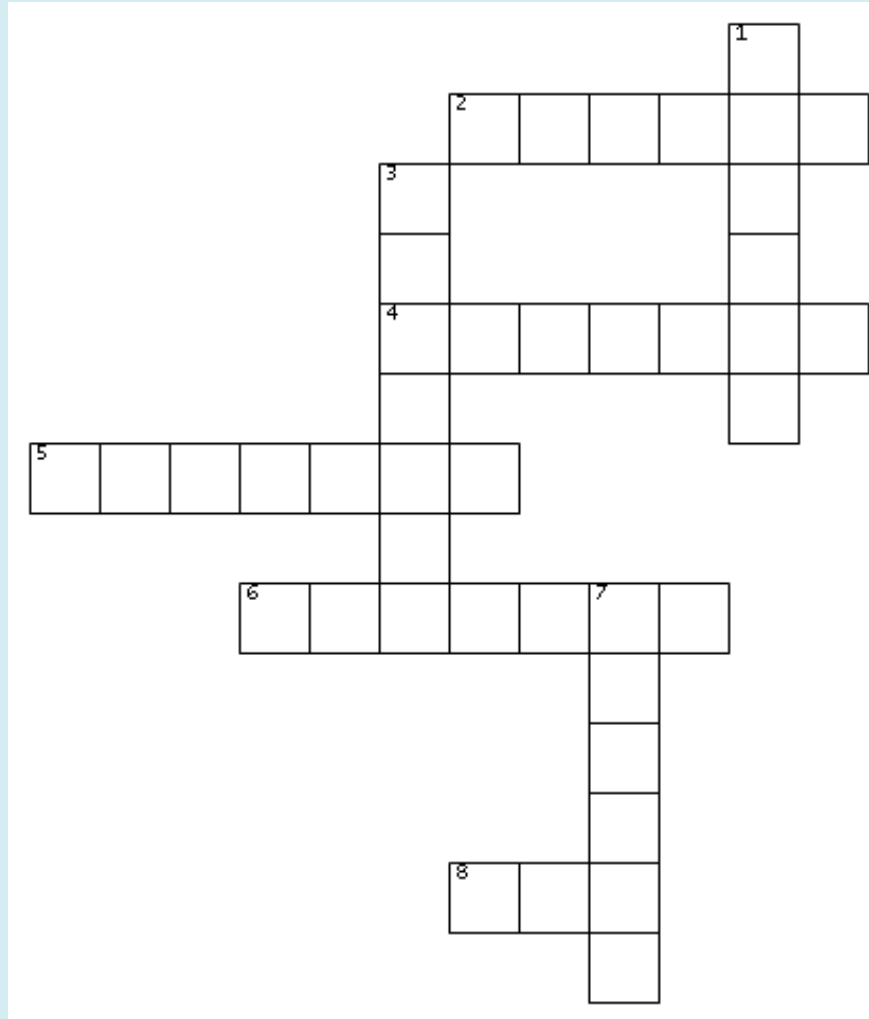
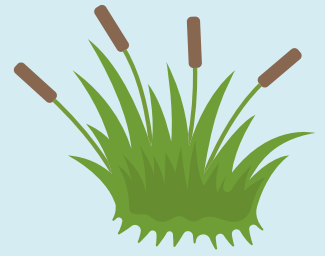
Pen
Sedge
Spring
Swan
Trumpeter

F	T	G	Q	Y	Z	H	T	D	L	A	U	M	I	R
S	Y	A	T	B	S	R	E	T	E	P	M	U	R	T
F	P	K	R	U	T	C	M	E	P	S	L	P	N	T
O	B	R	R	K	C	A	T	T	A	I	L	T	I	J
F	B	L	I	V	S	S	Y	E	J	H	T	S	B	L
O	U	V	R	N	F	U	G	D	O	P	V	E	T	E
B	G	N	S	E	G	Y	M	L	K	M	O	N	B	O
S	S	A	R	G	V	I	Z	I	C	U	X	A	I	I
A	A	R	Q	G	W	A	O	U	M	T	M	W	L	T
P	S	C	Q	F	L	A	E	B	E	A	O	Q	E	T
X	V	Y	Q	X	N	A	A	B	Z	C	X	T	Y	I
S	H	G	S	E	D	G	E	S	C	N	O	K	W	D
H	C	N	P	N	E	D	J	W	B	T	G	B	K	W
Q	E	E	N	G	P	I	I	A	X	Z	I	X	H	T
Z	C	T	G	T	T	V	N	N	R	G	Z	J	Q	W





TRUMPETER SWAN CRISS CROSS



ACROSS

2. A baby swan.
4. The call of the trumpeter swan sounds like this musical instrument.
5. A rodent that lives around lakes and digs burrows called dens.
6. A grass-like plant that grows in the shallow water of lakes and ponds.
8. A female swan.

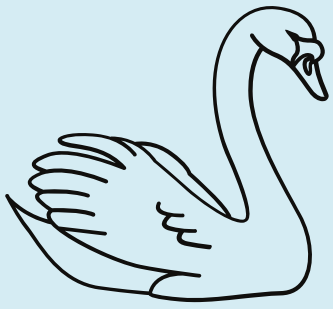
DOWN

1. A large rodent that lives around lakes and builds homes out of branches.
3. A plant with long, brown flower spikes that grows in the shallow water of lakes and ponds.
7. The time of year when birds nest and lay eggs.

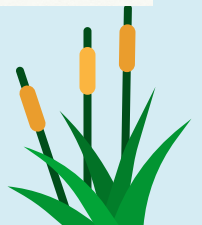
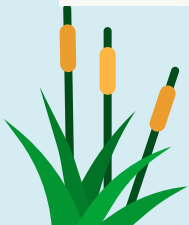
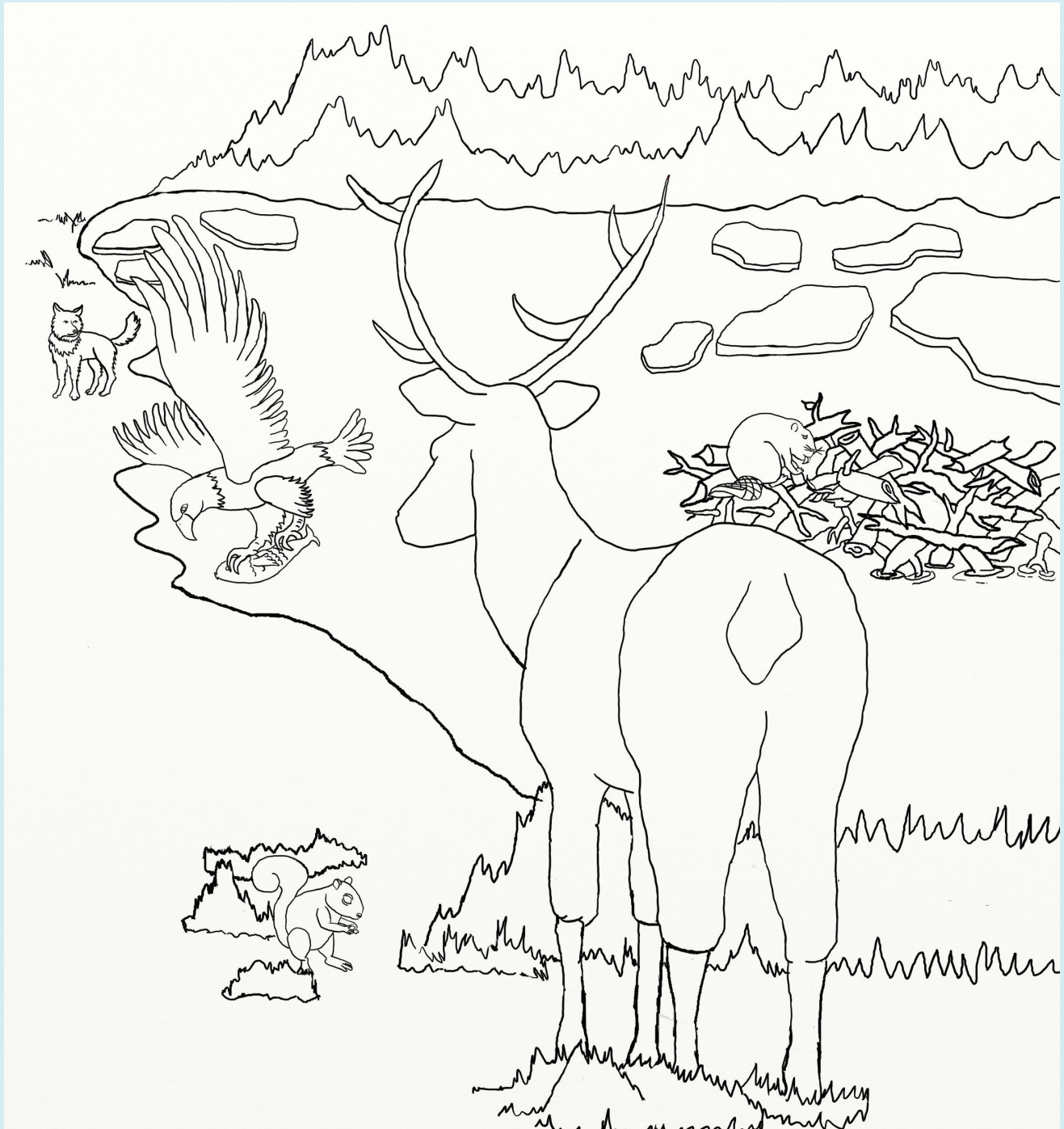
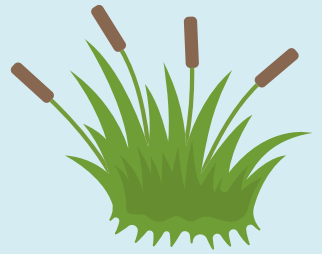
Use the clues to fill in the words above.

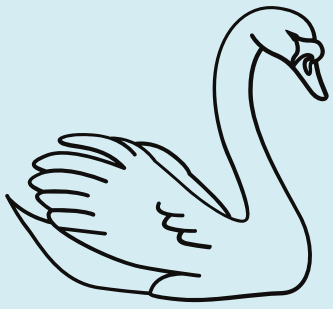
Words can go across or down.

Letters are shared when the words intersect.

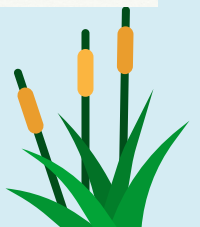
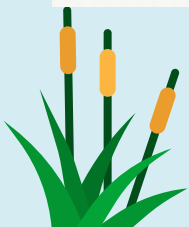
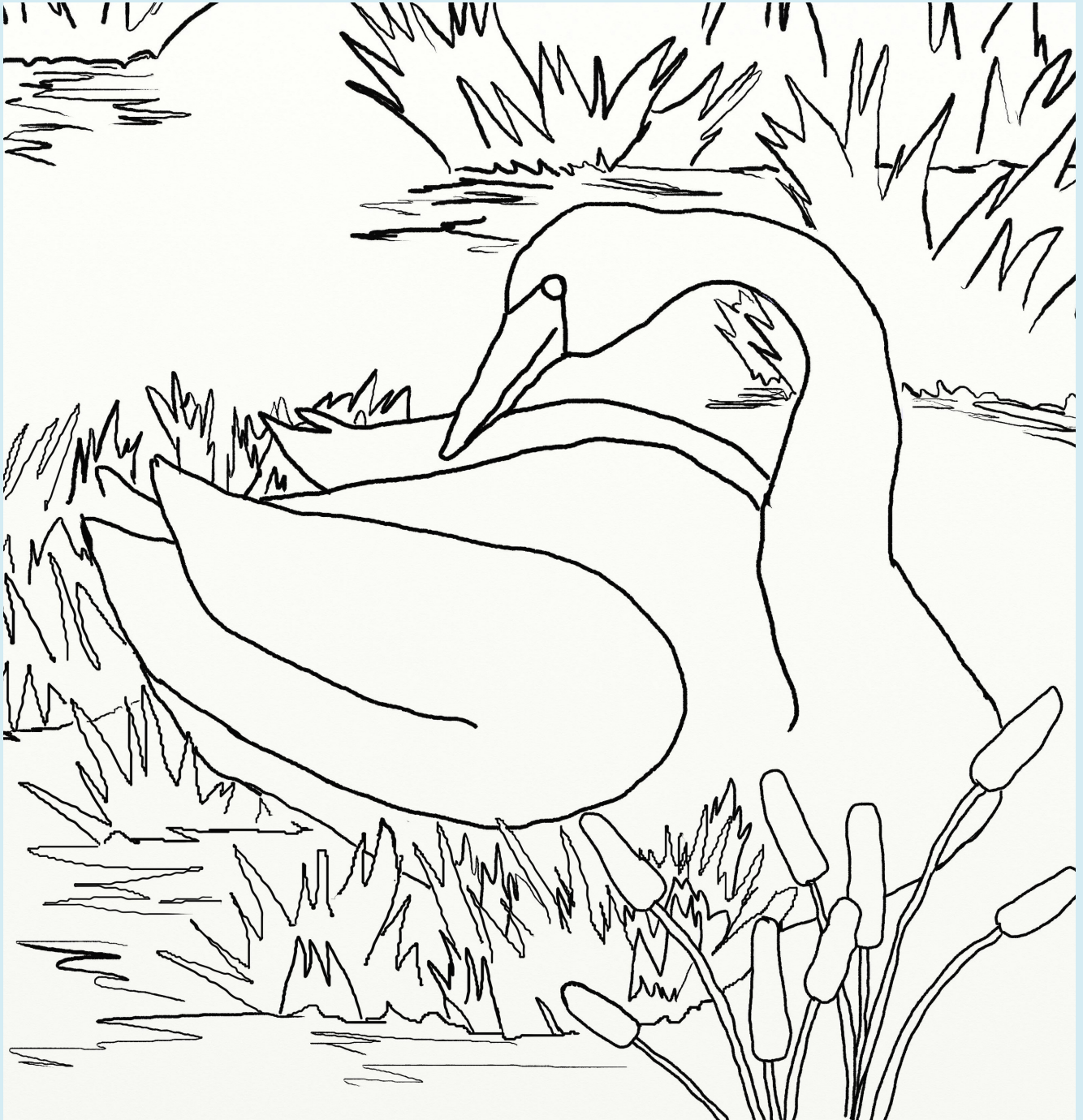
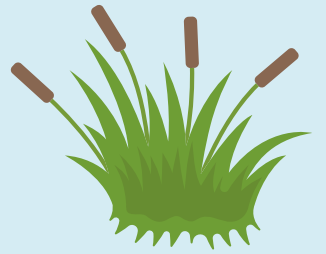


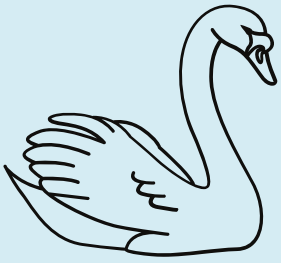
THE LAKE SPRINGS TO LIFE



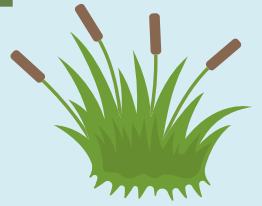


TIME TO BUILD A NEST





COMPARE & CONTRAST

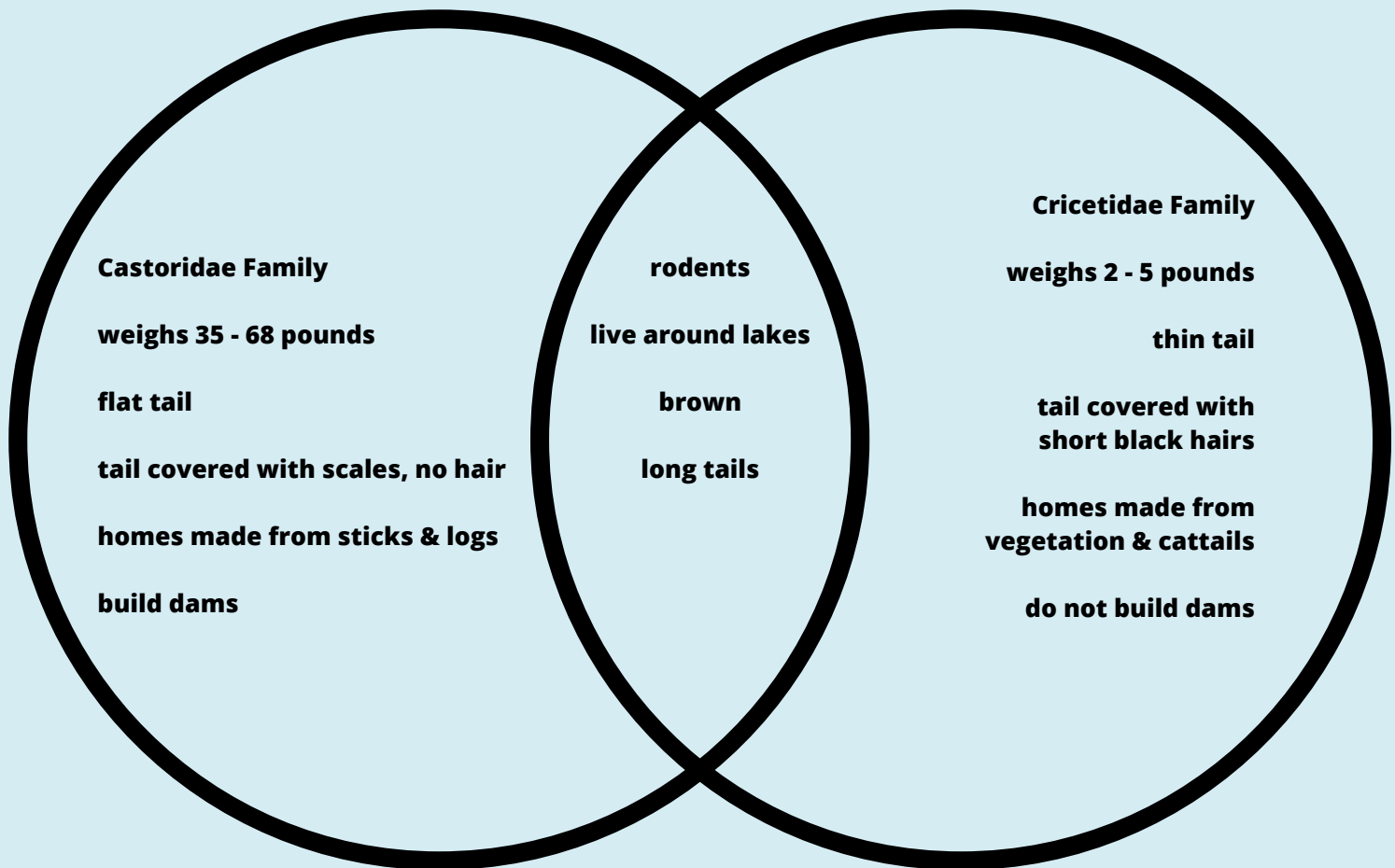


Suggested Answers

Complete the Venn diagram by comparing and contrasting a beaver and a muskrat.

Beaver

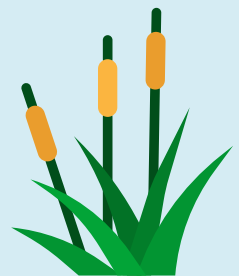
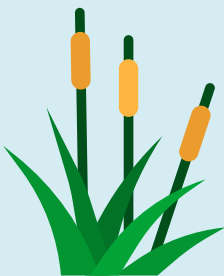
Muskrat

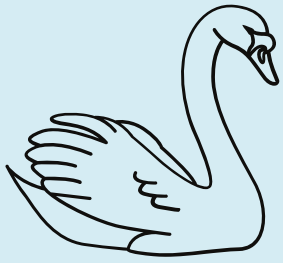


Contrast

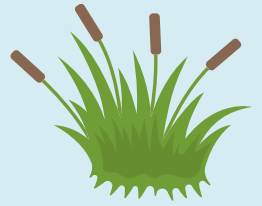
Compare

Contrast

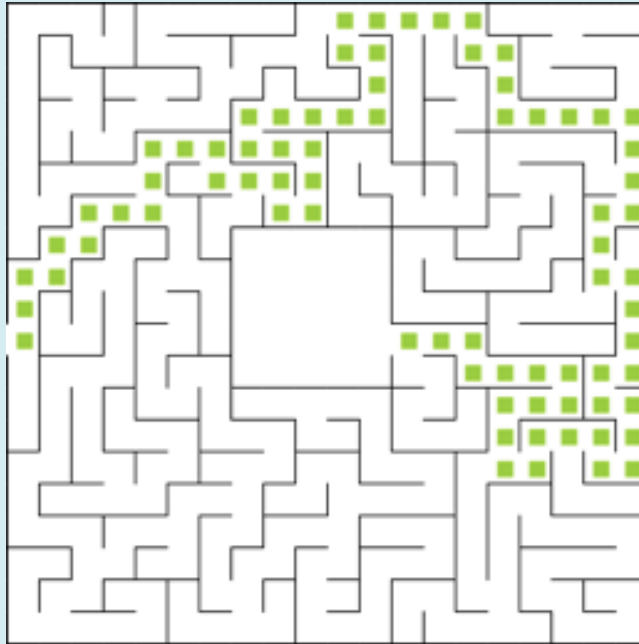




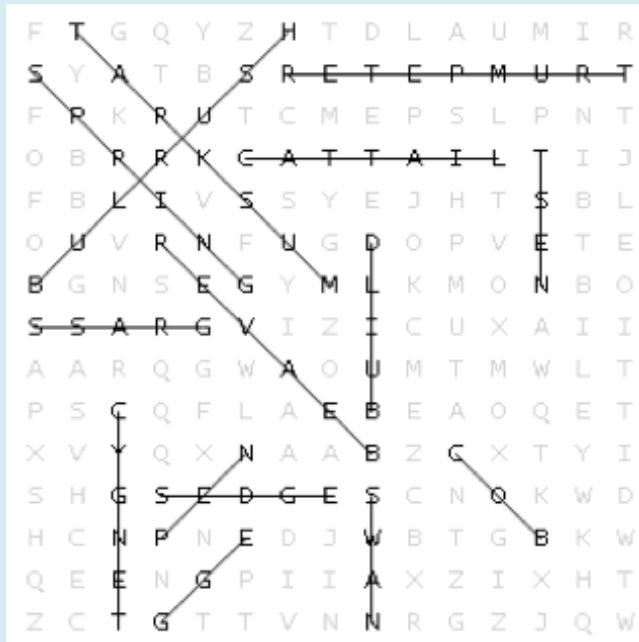
PUZZLE SOLUTIONS



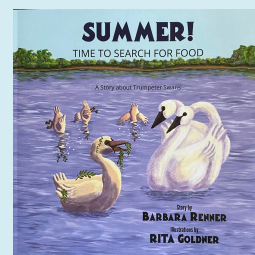
Maze

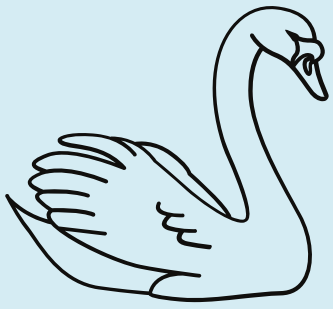


Word Search

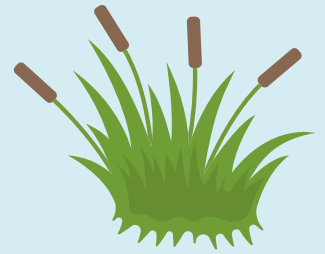


Read another book about Trumpeter Swans
www.RennerWrites.com





TRUMPETER SWAN CRISS CROSS



Solution

